

# **Pro Surveillance System 4.0**

*Quick Start Reference Guide*

# Table of Contents

1) Overview.....	3
2) Initial Setup – Adding a Connection.....	4
3) Viewing Live Cameras.....	6
4) Single or Multi Channel Playback.....	8

## **1) Overview:**

Version 4.0 of the Pro Surveillance System is our latest client end application for network monitoring. This version will support connections not only to Flex/Max series recorders, but anything from our IP camera line, including our Network Video Servers and Video decoders! This software is a great solution for users who don't wish to use the Internet Explorer web interface, or for users who have multiple sites they would like to centrally view and manage.


## 2) Initial Setup – Adding a New Connection

This chapter will walk you through the initial setup of your EPSS software. The first step after installation is traditionally to add your connection information into the software.

Step 1: Start off by launching the PSS software application. If you haven't changed it yet, use the user name "admin" and password as "admin". See Figure 2-1.



Figure 2-1

Step 2: Once logged in to the software, click the  button next to 'Setting Manage', and choose 'Device Manage' from the list. You will see the following menu. See Figure 2-2.

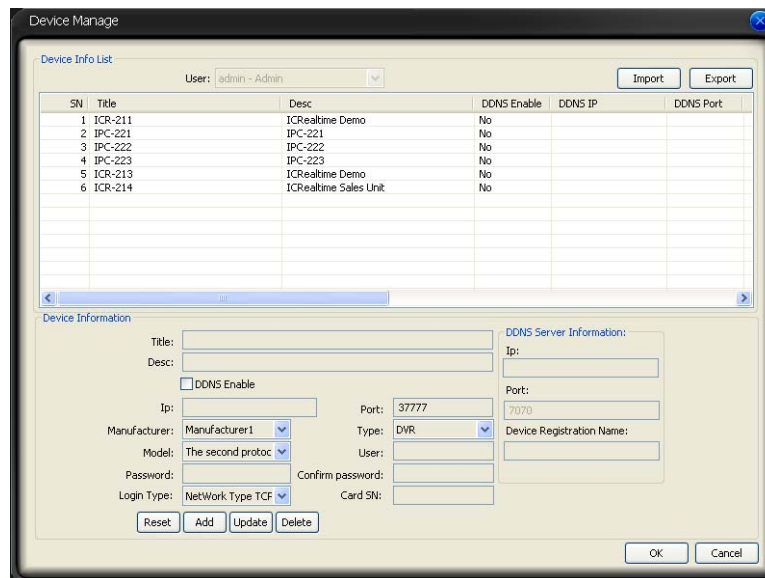


Figure 2-2

Step 3: Hit the **'Add'** button at the bottom of the form – the fields will become active. Fill out the following page with your connection information. The **'Title'** is to associate a name with your device. **'Desc'** is a brief description (not required.). **'IP'** will be the actual IP address assigned to your device. **'Port'** is your connection port of the device (typically 32789). **'User'** is your user name to login with. **'Password'** and **'Confirm Password'** are your passwords for your user name.

Once you have these fields filled out, click **'Save'** to add these entries to your device table. Once finished adding devices, click **'OK'** at the bottom. You should see the following prompt to acknowledge your entries. See Figure 2-3.

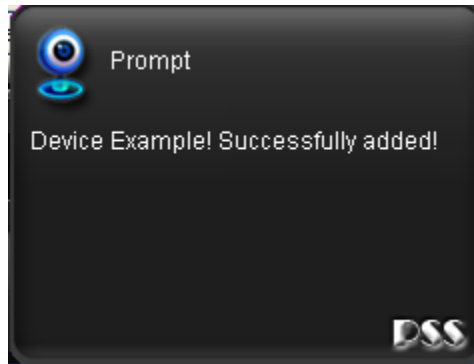


Figure 2-3

Step 4: You will now have your device listed under your **'Device List'** with the respective title. Right click on your device, and choose **'Log In'** to actually connect. From here, you can double click on the camera beneath your device to connect the video stream.

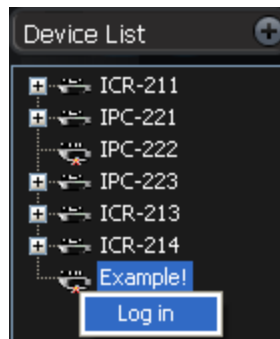


Figure 2-4

### 3) Viewing Live Cameras

If you've been following from the previous chapter, you should be currently connected to your device! This chapter will step you through arranging your cameras for live viewing.

Step 1: After successfully creating a new connection, right click on your device from your **'Device List'** and choose **'Log In'**. See Figure 3-1.



Figure 3-1

Step 2: If you have successfully connected, the software should prompt you towards the bottom right of the screen. See Figure 3-2. You will also notice a + next to your device name – you can expand the camera list by clicking on the + symbol. See Figure 3-3.

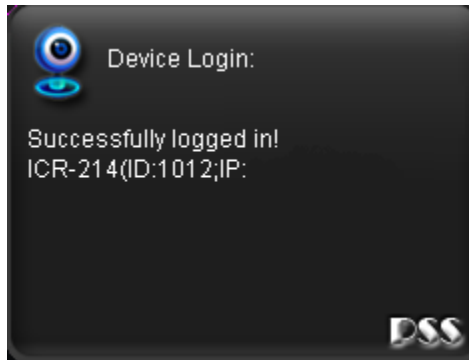


Figure 3-2

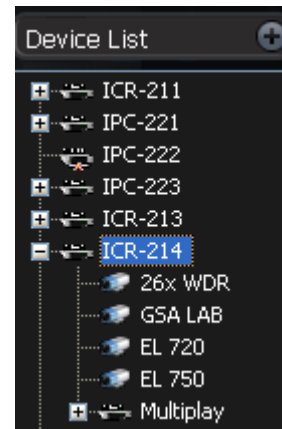


Figure 3-3

Step 3: Once you see your list of cameras beneath the device, you can connect to the video stream by double clicking the actual camera name. Your video will move to the viewing box that is outlined in green. See Figure 3-4. To change your total number of video windows or window layout, select from your views at the bottom left of the interface. See Figure 3-5.



Figure 3-4. Note the Green Outline.



Figure 3-5 From left to right: Transfer Mode, Full-Screen, View 1, View 4, View 6, View 8, View 9, View 13, View 16, View 20, View 25, View 36

## 4) Single or Multi Channel Playbacks

We previously explained how to connect and view live cameras. This chapter will explain how to perform a search, and also backup the recorded video.

Step 1: Once logged in to the software as well as your device, click on the Playback



icon. See Figure 4-1.

Step 2: Choose a device from the 'Device' pull down menu, and also choose a camera from the following pull down menu. Also specify your 'Type' of recording, and your 'Start' and 'End' times as well. Once that is completed, click the **Search** button for a list of results. See Figure 4-2.

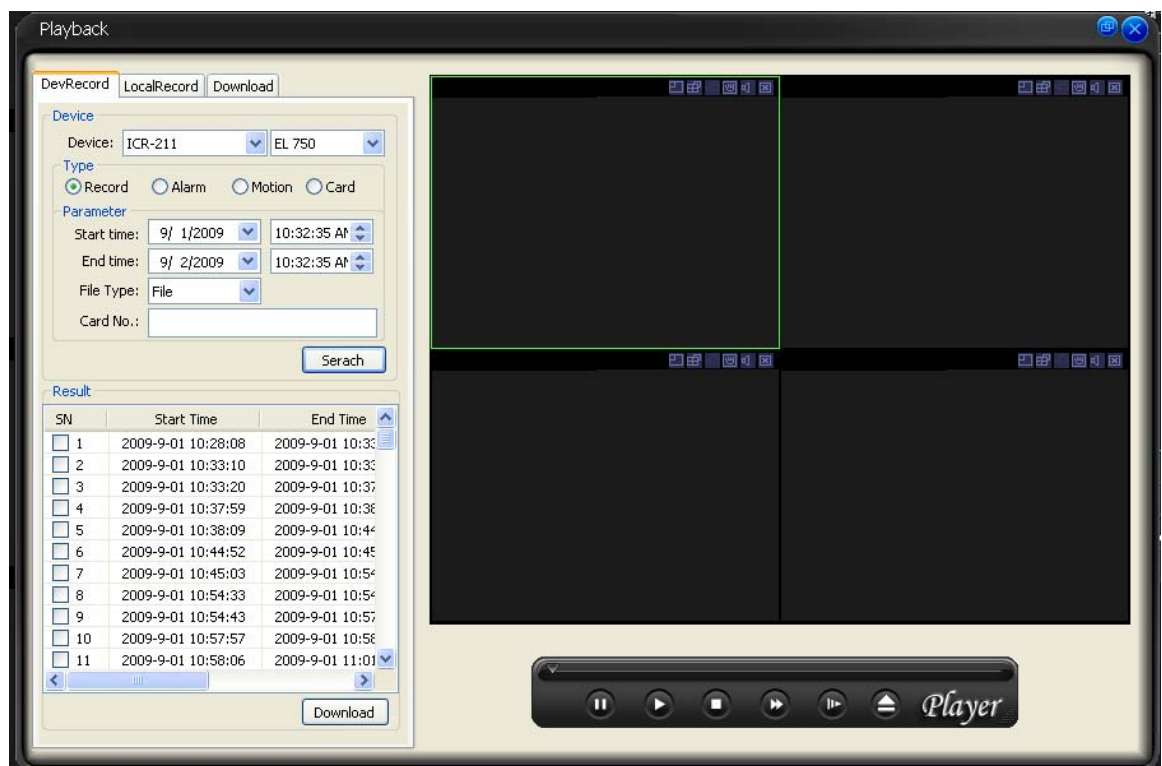


Figure 4-2

Step 3: Your results will be numbered in order of relevance. To start one of the results, simply double click on the start time from your **Results** table. Note your playback will move to the highlighted (green) video window. From here, you can manipulate the video using the playback controls at the bottom right.

Step 4: If you would instead like to download or backup your video, place a check next to your playback file in your **results** list, and click the **Download** button at the bottom.

*For further information or troubleshooting assistance on this software or any of our products, please visit <http://icrealtime.com/support>*